

NOUWEN LEGACY

CELEBRATING HENRI NOUWEN'S SPIRITUAL IMPACT



HENRI NOUWEN & SPIRITUAL POLARITIES

Focus: Woundedness and Healing

One-Day Retreat/Workshop

(First of a Three-Part Series)

Feb. 26, 2011 (Saturday)

9:00 am-3:30 pm

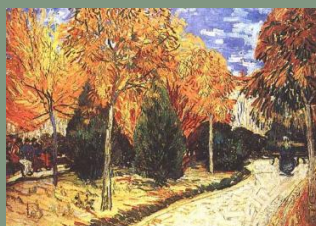
Cathedral Center of St. Paul of the Diocese of L.A.

(Echo Park, Los Angeles, CA)

Co-hosted with St. James Episcopal Church (South Pasadena)

Introducing the HENRI NOUWEN and SPIRITUAL POLARITIES

2011 Retreat Series



▶ UPCOMING EVENTS



Henri Nouwen and Spiritual Polarities

"Suffering & Glory"

(2nd of 3 Series)

April 23

"Life & Death"

(3rd of 3 Series)

June 25

9:00 am-3:30 pm

Cathedral Center of
St. Paul of the
Diocese of LA

Dear Friend,

Starting the month of February, I am launching a 3-part series on the umbrella topic of Spiritual Polarities focusing on how Henri Nouwen navigated his way through the tension brought about by two opposing constructs. The theme is based on my third book on Nouwen to be published by Paulist Press at the end of 2011.

There will be two main offerings with three sessions each. One will be at the Cathedral Center and the other will be at the Arboretum. You can choose any retreat topic that interests you the most from either one of these two offerings. You can also mix-match and switch from one venue to another. Of course, you are welcome to attend the entire series if you like, from one or both of the offerings.

I look forward to seeing you in one or more of these event series.

Your companion on the journey,

WIL

3-Part Retreat/Workshop Series

(Cathedral Center of St. Paul of the Diocese of LA)



(This Series is co-hosted with St. James Episcopal Church)

HENRI NOUWEN & SPIRITUAL POLARITIES

9:00 am - 3:30 pm (3 Saturdays)

February 26, 2011

(First of 3 Series)

Focal Theme: *Woundedness & Healing*

As paradoxical as it may sound, Henri Nouwen says that the route toward wholeness and healing is in and through our own brokenness and woundedness.



Henri Nouwen and Spiritual Polarities

*"Self-Owning & Self-
Giving"*
(1st of 3 Series)
March 26

*"Solitude &
Community"*
(2nd of 3 Series)
May 7

" Presence & Absence "
(3rd of 3 Series)
July 16

9:00 am-3:30 pm
Los Angeles County
Arboretum & Botanical
Garden
(Arcadia, CA)

CLICK HERE

**FOR MORE
INFORMATION**

Or Check out the
Calendar of Events

[Here](#)

Registration Information

(For the Cathedral Series starting on Feb. 26)

Retreat Fee: \$ 60 per session (includes lunch & materials)

Note: If you register for all three sessions, you only pay \$ 150.

* The fee for the **Arboretum Series** is \$ 50 per session and \$ 130 for all three sessions.

Deadline to register: February 21 (Mon.)

First come, first served basis (Maximum of 50 people).

How to Register:

First, email wil@nouwenlegacy.com or call: 626-318-6696 to reserve a spot.

Second, pay the retreat fee at once either by **mailing it directly** to:

The Nouwen Legacy
595 East Colorado Blvd.
Suite 431
Pasadena, CA 91101
Important: Make check payable to *The Leadership Institute*

OR

by **paying online** via The Leadership Institute website. Click [HERE](#) to pay using PayPal or Credit Card.



NOTE: Spot is only guaranteed once payment is received either via mail or online. Do not send any payment until you have contacted Wil either via email or phone first. Once you pay, you will then receive a confirmation email along with further instructions and details about the retreat.